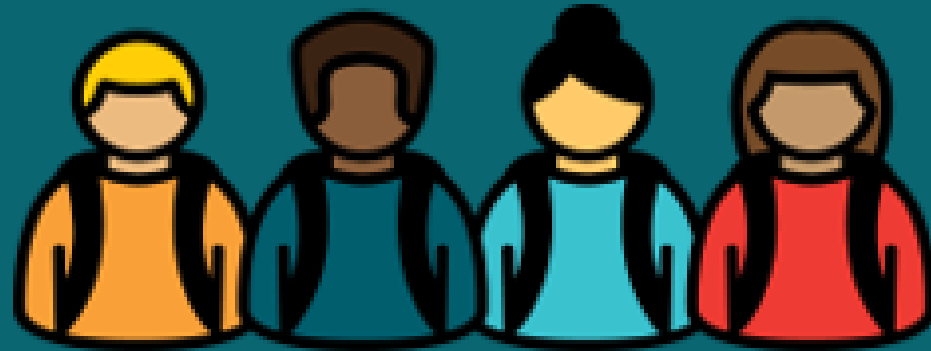


Student Success Coaches (SSCs):

**Investing in Near Peer Mentors
to Accelerate Student Achievement**





Dr. Harold Border

Chief Strategy Officer
Orange County Public Schools
Orlando, FL



Ashley Zenzel

Managing Director of Impact
City Year Orlando
Orlando, FL

Overview

- Background and Overview of Orange County Public Schools (OCPS)
- Using Student Success Coaches to Accelerate Student Achievement
- Creating Conditions for Success
- Open Forum: Q&A Session



Orange County Public Schools

- Established in 1869
- 8th largest district in the nation
- More than 213,000 students
 - 165 countries
 - 157 languages
 - 199 schools
 - More than 25,000 employees

OCPS MISSION

*With the support of families and the community,
we create enriching and diverse pathways to lead our students to success.*

PILLARS

- High-quality instruction and student engagement from supported, respected, and resourced teachers.
- Eliminate barriers and assure access to quality education for all children, especially children of color.
- Partnerships between teachers, support staff, families, and the community.
- Supporting teaching and learning and cross-functional collaboration.

The Power of Near Peer Mentors



Student Success Coaches help create the conditions for equitable, personalized, holistic student development

Student Success Coaches

serve full time on diverse teams integrated into schools to support...

- **Positive developmental relationships**
- **Environments *that foster feelings* of safety and belonging**
- **Rich learning experiences and knowledge development**
- **Development of skills, habits, and mindsets**

Understanding the Needs and Urgency

Now—more than ever—students need to feel supported, seen, heard, and understood by adults in their schools and communities... and the NPSS will mean more students have a trusted adult in their corner.

Dr. Miguel A. Cardona
US Secretary of Education



NATIONAL PARTNERSHIP
FOR *Student Success*

Six Drivers to Support Effective SSC Programs



Authentic Coach/Student Relationship



Data-informed programming



Diverse group of skilled coaches



Ongoing learning and development



Intentional school integration and holistic supports



Supportive program structure



Open Forum

Q & A