



# A Public School on the St. Jude's Ranch Campus: A Partnership

---

Mr. Kevin McPartlin  
*Associate Superintendent*

Ms. Amy Manning  
*Principal*

Dr. Christina Vela  
*CEO, St. Jude's Ranch*

**300,000+** Students

**370+** School Programs

**40,000+** Employees

**~8,000** Square Miles

**Urban and Rural** Communities

## Main Areas of Focus & Progress

**Trust & Relationships**

Recruit & Retain Employees

Communication

Mental Health

Systems and Structures

### Interim Superintendent

Brenda Larsen-Mitchell

### Board of School Trustees

Evelyn Garcia Morales, President  
Irene Bustamante Adams, Vice President  
Lisa Guzmán, Clerk  
Isaac Barron, Member  
Lola Brooks, Member

Linda P. Cavazos, Member  
Ramona Esparza-Stoffregan, Member  
Adam Johnson, Member  
Lisa Satory, Member  
Brenda Zamora, Member



# The Healing Center School at St. Jude's Ranch for Children

The Why

Partnership

Programming

Budget

Construction

Staffing

# The Why Background

- St. Jude's Ranch for Children-Providing pathways to hope & healing for child victims of abuse and neglect since 1966.
- Clark County School District  
*Local High School*  
*Nevada Learning Academy at CCSD — Online Programming*
- An urgent need to provide high quality trauma informed care for child victims of sex trafficking with a full array of services that focus on safety, permanency & well-being. Important focus on high quality education





# Operations

## Ground Lease

- Project: District construction on St. Jude's Ranch land
- Rent: Construction and Operation Costs
- Term: 49 years + 2 consecutive 25 years; 99 years total

## District Financial Obligations

- Construction: \$5 million; grant and bond
- School Budget: \$1.5 million annually; staffing, maintenance, and general

## Capacity

- Size: 10,000 square feet
- Enrollment: Up to 62 students



# Staffing

## Administrative

- 1 principal

## Licensed Positions

- 1 counselor
- 2 special education teachers
- 6 content area teachers

## Support Professional Positions

- 1 administrative secretary
- 1 registrar
- 1 custodian
- 1 campus security monitor



# Programming

Hybrid Schedule

Offering 8  
courses per  
semester

Daily  
Mentorship and  
Guidance

Hope Fridays

Late Start Time

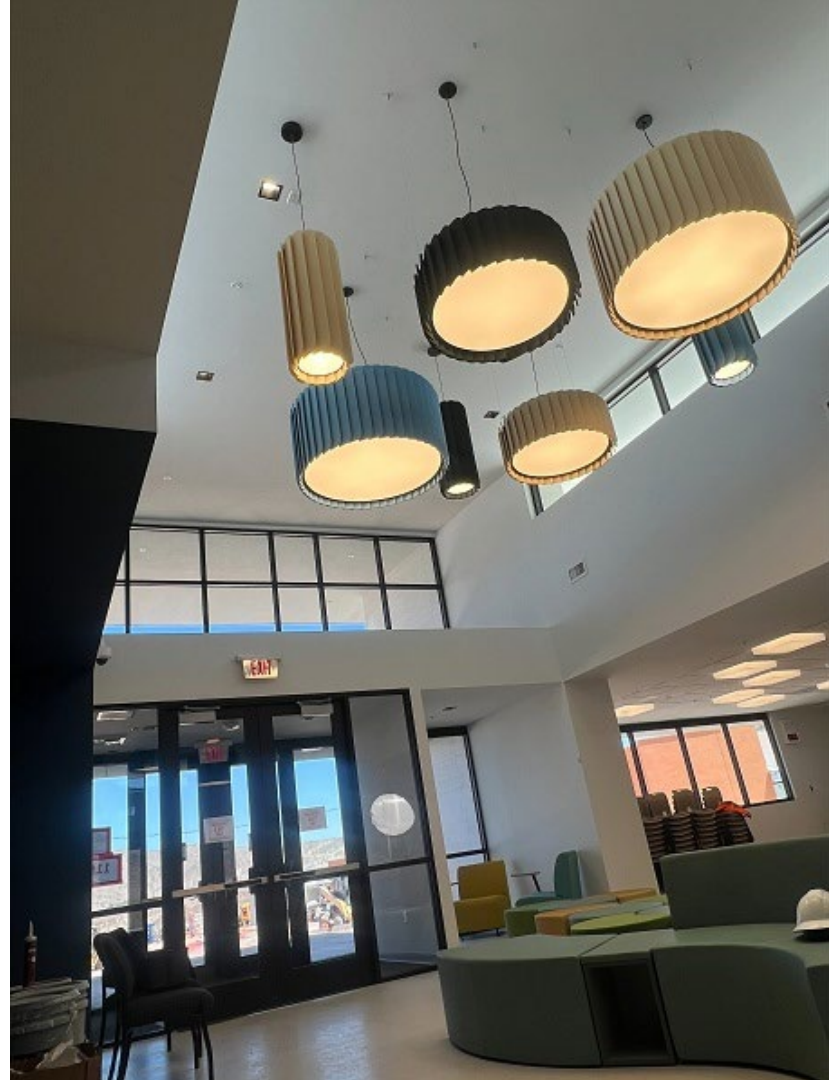
Embedded  
Trauma-Informed  
Care

Support Animal

Yoga-Trained  
Staff





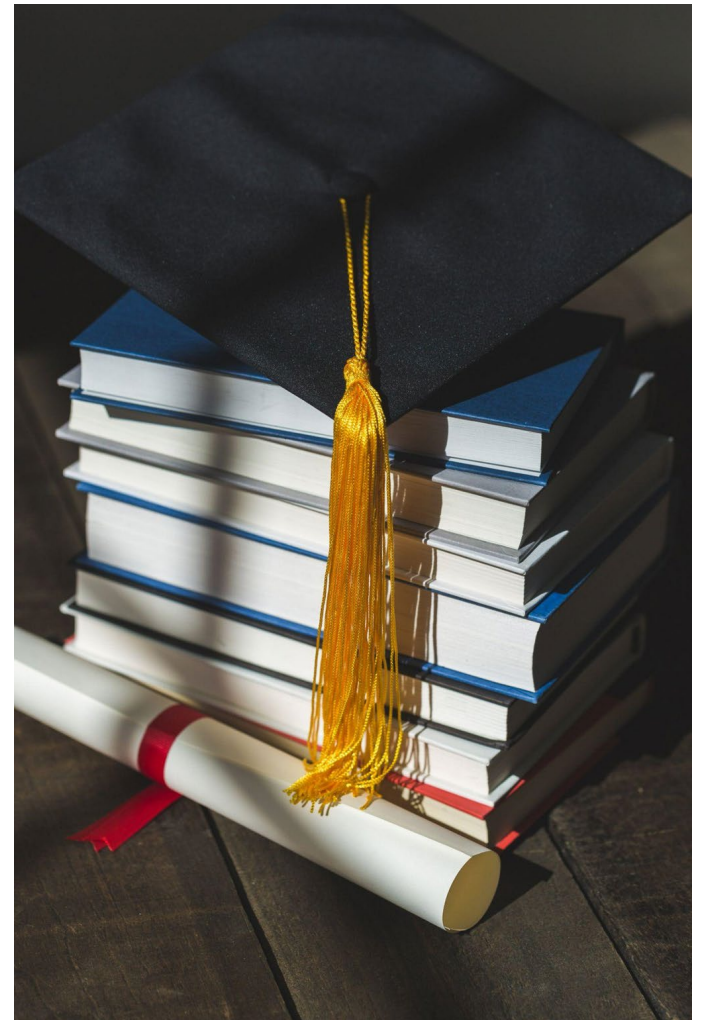






# Success Indicators

- Safety and Relationships
- Attendance
- Course Completion
- Credit Retrieval
- Graduation Rate





# The Partnership: Nonprofit and Public Education

- Hope Home
- Innovative Thinking
- Trauma-Informed Practices
- Provide around-the-clock services and care for at-risk youth
- Increased public awareness of sex trafficking
- Additional partnerships





BOARD OF SCHOOL TRUSTEES

Evelyn Garcia Morales, President  
Irene Bustamante Adams, Vice President  
Lisa Guzmán, Clerk  
Isaac Barron, Member  
Lola Brooks, Member  
Linda P. Cavazos, Member  
Ramona Esparza-Stoffregan, Member  
Adam Johnson, Member  
Lisa Satory, Member  
Brenda Zamora, Member  
Brenda Larsen-Mitchell, Ed.D.,  
Interim Superintendent